

RECORD OF SURVEY

RS 2582

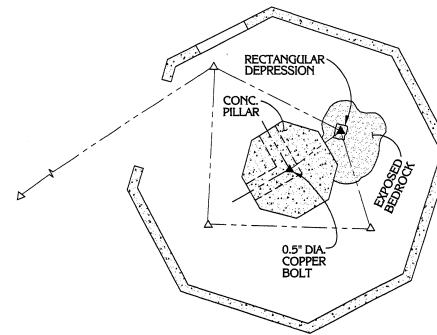
TO DETERMINE THE LOCATION
OF
THE MOUNT DIABLO INITIAL POINT
LOCATED ON
THE TOP OF MOUNT DIABLO
CONTRA COSTA COUNTY, CALIFORNIA

Prepared By:
JOHN W. PETTLEY, PLS
JULY 2001

LEGEND

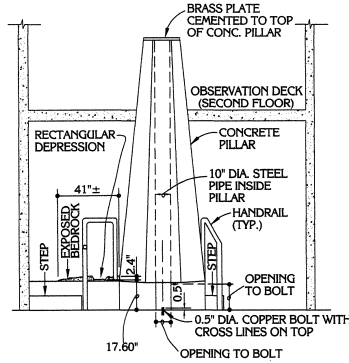
▲	FOUND MONUMENT AS NOTED
△	SET TEMPORARY TRAVERSE POINT AS NOTED
()	DENOTES REFERENCES OR RECORD DATA
USCGS	UNITED STATES COAST AND GEODETIC SURVEY

LAYOUT OF MONUMENTS INSIDE OF BASEMENT OF TOWER JULY 1987



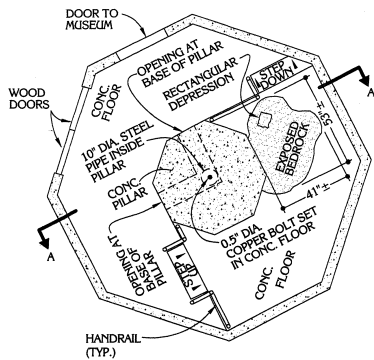
NTS

SECTION A-A SHOWING INSIDE OF BASEMENT OF TOWER JULY 1987



NTS

PLAN VIEW SHOWING INSIDE OF BASEMENT OF TOWER JULY 1987



NTS

REFERENCES (SEE SHEET 1)

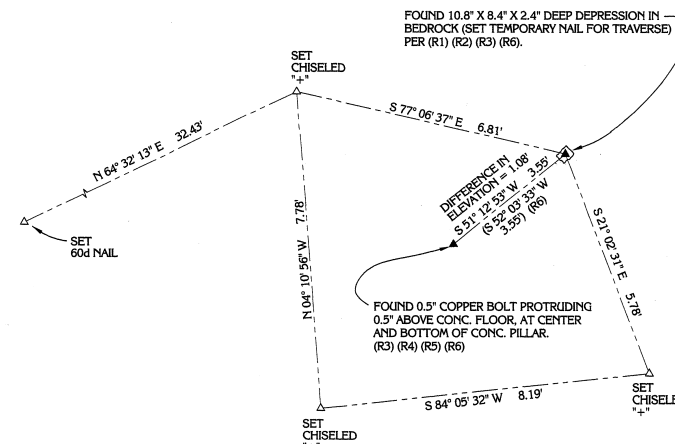
- R1 - VOLUME 231 - FIELD NOTES OF LEANDER RANSOM
- R2 - VOLUME 201 - FIELD NOTES OF LEANDER RANSOM
- R3 - REPORT OF R. D. CUTTS, USCGS
- R4 - REPORT OF GEORGE DAVIDSON
- R5 - RECORDS OF USCGS
- R6 - RECORD OF SURVEY NO. 946 FILED IN BOOK 18 OF MAPS, PAGES 17-37, RECORDS OF ALAMEDA COUNTY

BASIS OF BEARINGS

THE BEARING OF S 42° 07' 54" W BETWEEN TWO FOUND MONUMENTS, AS DESCRIBED IN THE RECORDS OF THE U.S. DEPARTMENT OF COMMERCE, COAST AND GEODETIC SURVEY (R5), WAS USED AS THE BASIS OF BEARINGS FOR THIS MAP.

TRAVERSE INSIDE OBSERVATION TOWER

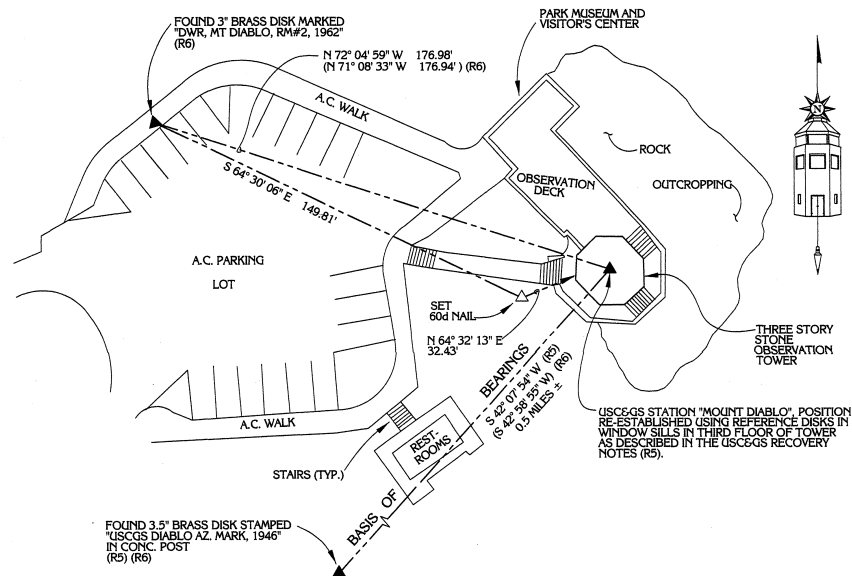
SCALE: 1" = 2'



SHEET 2 OF 3 SHEETS

TRAVERSE OUTSIDE OBSERVATION TOWER ON THE TOP OF MOUNT DIABLO

SCALE: 1" = 30'



NOTE: THE LINES LABELED WITH BEARINGS AND DISTANCES ARE DRAWN TO SCALE. LINES DEPICTING TOPOGRAPHIC FEATURES ARE APPROXIMATE, AND SHOWN FOR INFORMATION ONLY.

121 LSM 14